

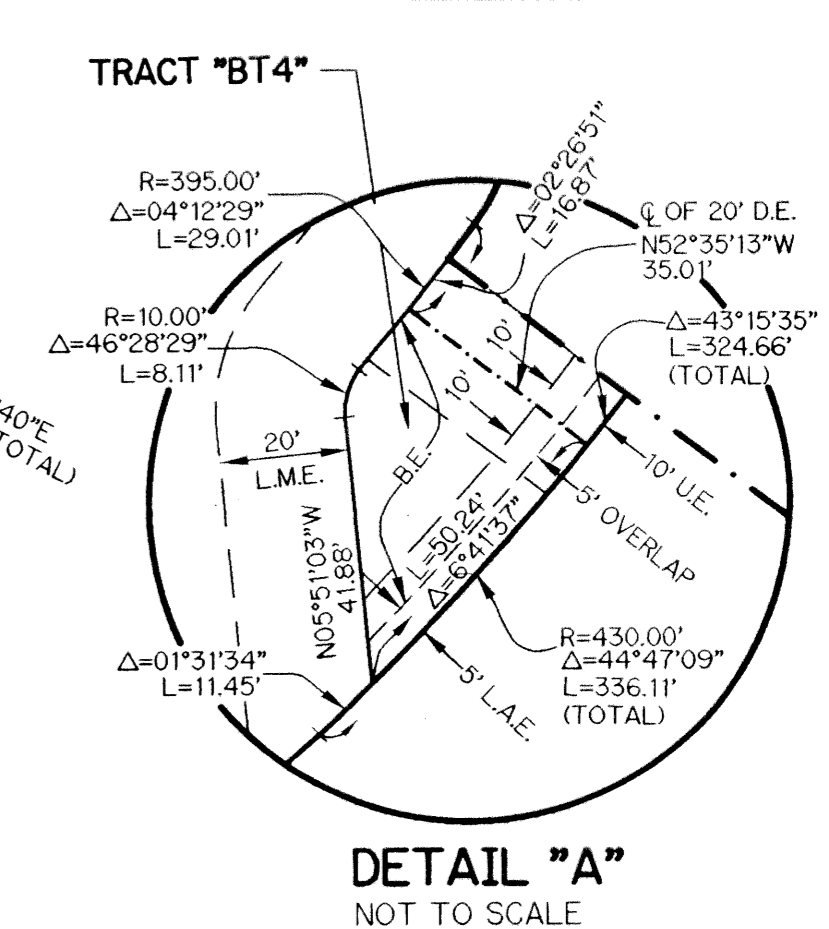
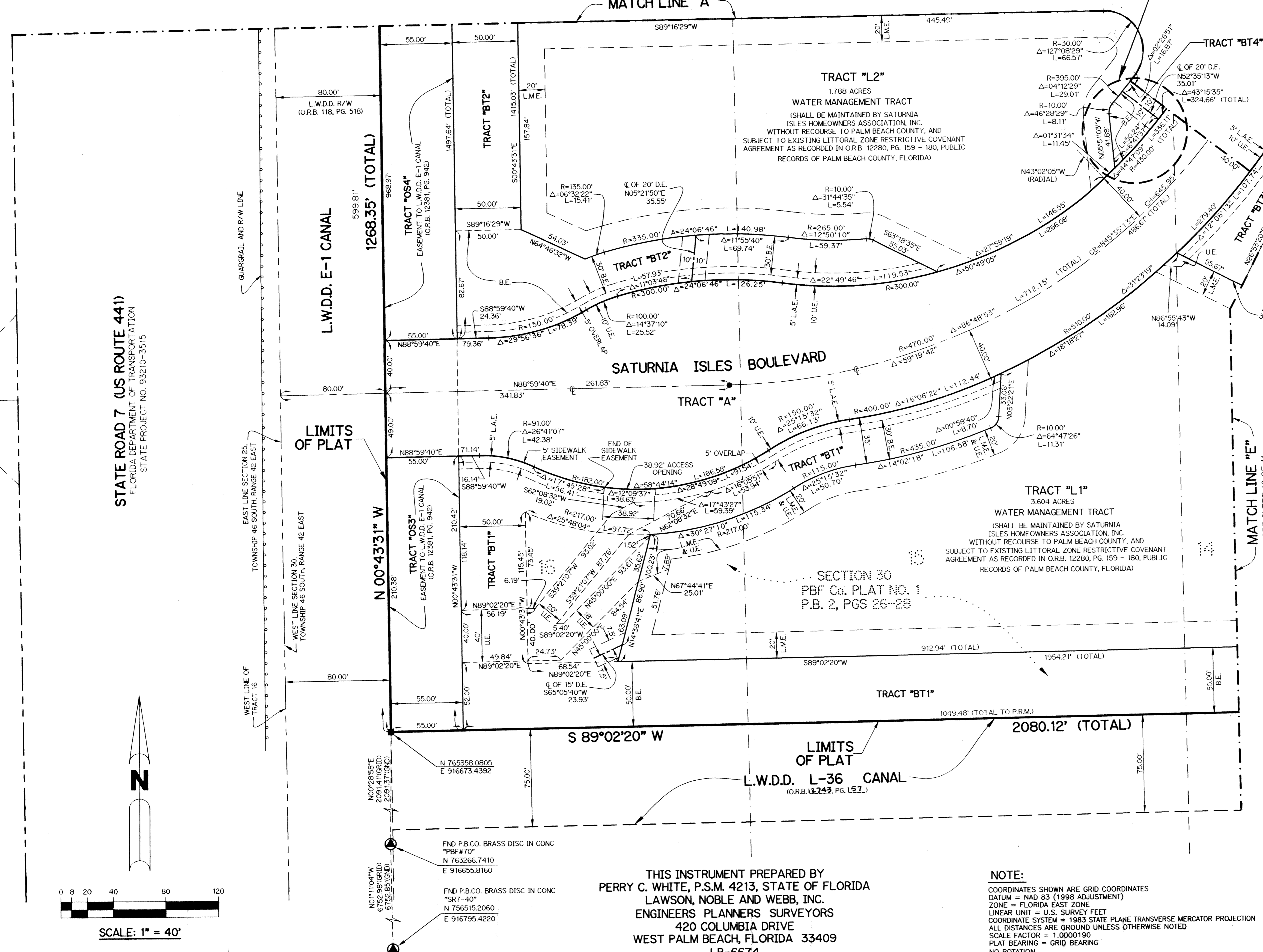
SATURNIA ISLES - PLAT ONE

BEING A REPLAT OF TRACTS 113 THROUGH 120 AND A PORTION OF TRACTS 105 THROUGH 108, SECTION 19, TOWNSHIP 46 SOUTH, RANGE 42 EAST AND A PORTION OF TRACTS 10 THROUGH 16, SECTION 30, TOWNSHIP 46 SOUTH, RANGE 42 EAST, PALM BEACH FARMS COMPANY PLAT NO. 1 AS RECORDED IN PLAT BOOK 2, PAGES 26 THROUGH 28 TOGETHER WITH BLOCKS 2 THROUGH 5 AND A PORTION OF BLOCKS 1 AND 6, MILLER'S PARK UNIT 2 AS RECORDED IN PLAT BOOK 4, PAGE 75 TOGETHER WITH ROAD RIGHT-OF-WAY ABANDONED PER OFFICIAL RECORD BOOK 12389, PAGE 1259 ALL OF THE PUBLIC RECORDS OF PALM BEACH COUNTY, FLORIDA, LYING IN SECTIONS 19 AND 30, TOWNSHIP 46 SOUTH, RANGE 42 EAST.

SHEET 2 OF 11 DECEMBER, 2000

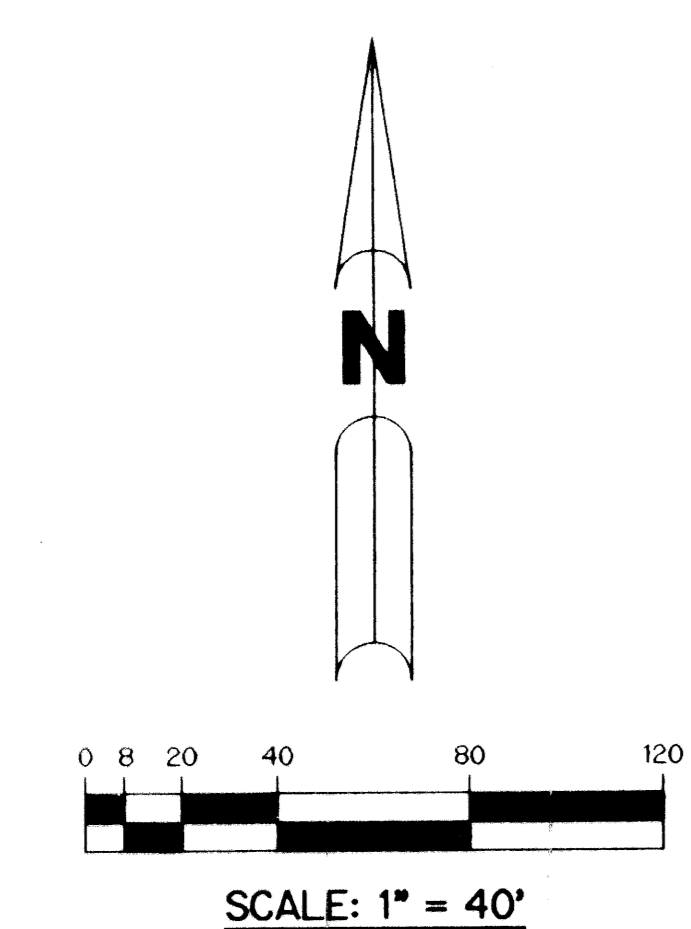
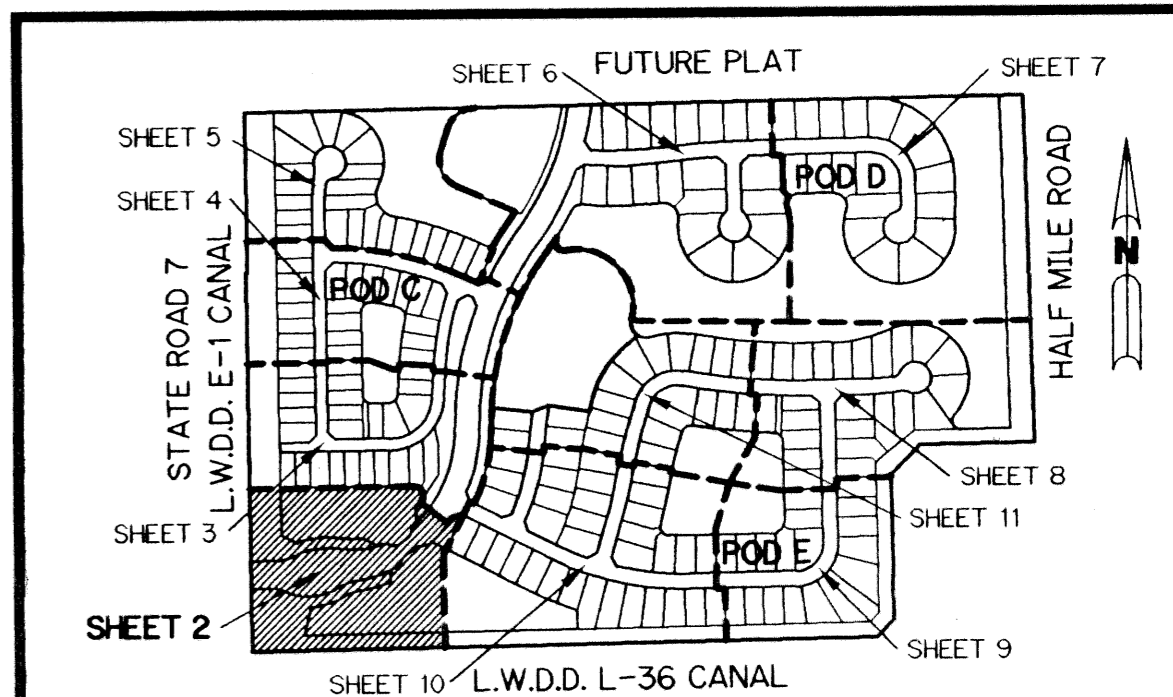
SEE SHEET 3 OF 11 MATCH LINE "A"

SEE DETAIL "A" (THIS SHEET)



- LEGEND:**
- - SET PERMANENT REFERENCE MONUMENT, L.B. #6674
 - - FOUND PERMANENT REFERENCE MONUMENT, L.B. #6674
 - - SET PERMANENT CONTROL POINT, L.B. #6674
 - - FOUND PERMANENT CONTROL POINT, L.B. #6674
 - Δ - DELTA ANGLE
 - ABAND. - ABANDONED
 - BE - BUFFER EASEMENT
 - CB - CHORD BEARING
 - CH - CHORD DISTANCE
 - ℄ - CENTERLINE
 - D.B. - DEED BOOK
 - D.E. - DRAINAGE EASEMENT
 - L.A.E. - LIMITED ACCESS EASEMENT
 - L.M.A.E. - LAKE MAINTENANCE ACCESS EASEMENT
 - L.M.E. - LAKE MAINTENANCE EASEMENT
 - L.W.D.D. - LAKE WORTH DRAINAGE DISTRICT
 - NR - NOT RADIAL
 - N.T.S. - NOT TO SCALE
 - O.E. - OVERHANG EASEMENT
 - O.R.B. - OFFICIAL RECORD BOOK
 - P.B. - PLAT BOOK
 - P.B.CO. - PALM BEACH COUNTY
 - P.S. - PAGES
 - P.C.C. - POINT OF COMPOUND CURVATURE
 - P.C. - POINT OF CURVATURE
 - P.I. - POINT OF INTERSECTION
 - P.T. - POINT OF TANGENCY
 - P.S.M. - PROFESSIONAL SURVEYOR AND MAPPER
 - P.R.M. - PERMANENT REFERENCE MONUMENT
 - R - RADIUS
 - RAD. - RADIAL
 - R/O.W. - RIGHT-OF-WAY
 - S.W.A.E. - SWALE DRAINAGE EASEMENT
 - S.T. - SURVEY TIE
 - (TYP.) - TYPICAL
 - U.E. - UTILITY EASEMENT
 - P.B.F.C. - PALM BEACH FARMS COMPANY PLAT NO. 1 (P.B. 2, PGS. 26 - 28)
 - N 737648.0171 E 905258.2326 - DENOTES STATE PLANE COORDINATES
 - - DENOTES TRACT NUMBER PER PALM BEACH FARMS COMPANY PLAT NO. 1 (PGS. 26-28)

KEY MAP



THIS INSTRUMENT PREPARED BY
 PERRY C. WHITE, P.S.M. 4213, STATE OF FLORIDA
 LAWSON, NOBLE AND WEBB, INC.
 ENGINEERS PLANNERS SURVEYORS
 420 COLUMBIA DRIVE
 WEST PALM BEACH, FLORIDA 33409
 LB-6674

NOTE:
 COORDINATES SHOWN ARE GRID COORDINATES
 DATUM = NAD 83 (1998 ADJUSTMENT)
 ZONE = FLORIDA EAST ZONE
 LINEAR UNIT = U.S. SURVEY FEET
 COORDINATE SYSTEM = 1983 STATE PLANE TRANSVERSE MERCATOR PROJECTION
 ALL DISTANCES ARE GROUND UNLESS OTHERWISE NOTED
 SCALE FACTOR = 1.0000190
 PLAT BEARING = GRID BEARING
 NO ROTATION

91 Saturnia Isles - Plat one
 109
 62
 Saturnia Isles - Plat one